

Tiger Pro 72HL4-BDVP

545-565 Watt

BIFACIAL MODULE WITH
DUAL GLASS

P-Type

Positive power tolerance of 0~+3%

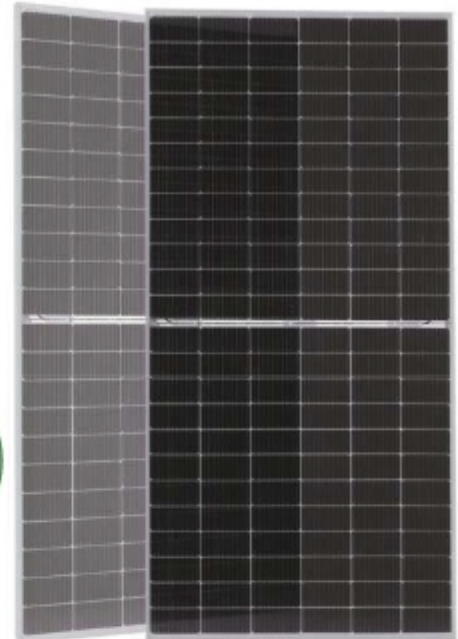
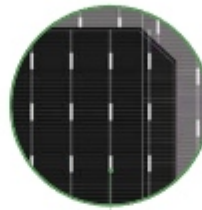
IEC61215(2016), IEC61730(2016)

ISO9001:2015: Quality Management System

ISO14001:2015: Environment Management System

ISO45001:2018

Occupational health and safety management systems



Bifacial Technology

Key Features



Multi Busbar Technology

Better light trapping and current collection to improve module power output and reliability.



PID Resistance

Excellent Anti-PID performance guarantee via optimized mass-production process and materials control.



Higher Power Output

Module power increases 5-25% generally, bringing significantly lower LCOE and higher IRR.



Longer Life-time Power Yield

0.45% annual power degradation and 30 year linear power warranty.



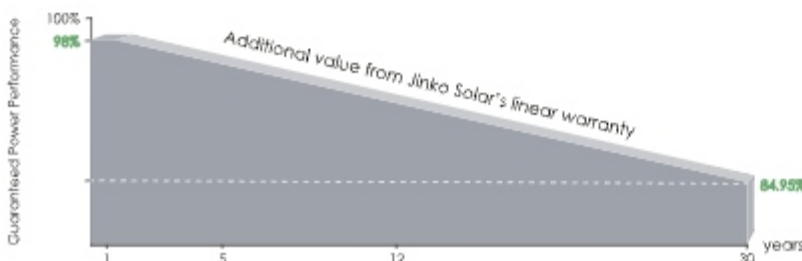
Enhanced Mechanical Load

Certified to withstand: wind load (2400 Pascal) and snow load (5400 Pascal).



POSITIVE QUALITY
Customer Quality Guarantee

LINEAR PERFORMANCE WARRANTY

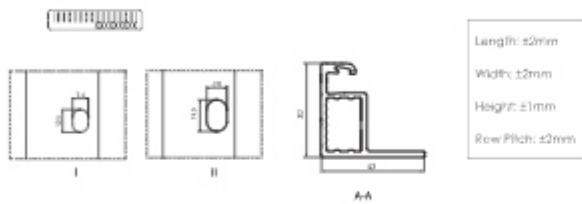
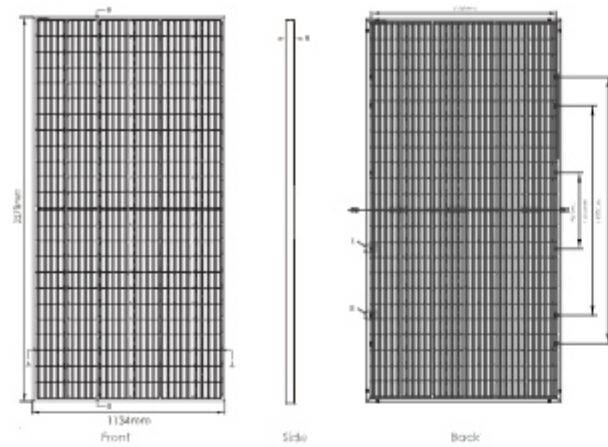


12 Year Product Warranty

30 Year Linear Power Warranty

0.45% Annual Degradation Over 30 years

Engineering Drawings

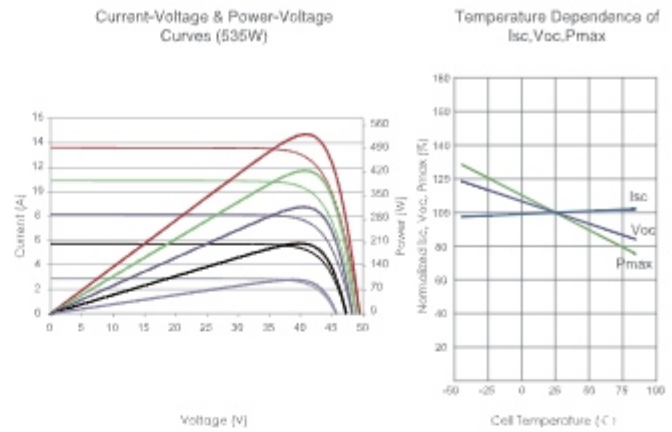


Packaging Configuration

1 Two pallets = One stack

36pcs/pallets, 72pcs/stack, 720pcs/ 40'HQ Container

Electrical Performance & Temperature Dependence



Mechanical Characteristics

Cell Type	P type Mono-crystalline
No. of cells	144 (6×24)
Dimensions	2278×1134×30mm (89.69×44.65×1.18 inch)
Weight	32 kg (70.55 lbs)
Front Glass	2.0mm, Anti-Reflection Coating
Back Glass	2.0mm, Heat Strengthened Glass
Frame	Anodized Aluminium Alloy
Junction Box	IP68 Rated
Output Cables	TUV 1×4.0mm ² (+): 400mm, (-): 200mm or Customized Length

SPECIFICATIONS

Module Type	JKM545M-72HL4-BDVP		JKM550M-72HL4-BDVP		JKM555M-72HL4-BDVP		JKM560M-72HL4-BDVP		JKM565M-72HL4-BDVP	
	STC	NOCT	STC	NOCT	STC	NOCT	STC	NOCT	STC	NOCT
Maximum Power (Pmax)	545Wp	405Wp	550Wp	409Wp	555Wp	413Wp	560Wp	417Wp	565Wp	420Wp
Maximum Power Voltage (Vmp)	41.32V	38.25V	41.51V	38.42V	41.70V	38.59V	41.89V	38.76V	42.08V	38.89V
Maximum Power Current (Imp)	13.19A	10.60A	13.25A	10.65A	13.31A	10.70A	13.37A	10.75A	13.43A	10.81A
Open-circuit Voltage (Voc)	49.92V	47.12V	50.11V	47.30V	50.30V	47.48V	50.49V	47.66V	50.68V	47.84V
Short-circuit Current (Isc)	13.95A	11.27A	14.01A	11.32A	14.07A	11.36A	14.13A	11.41A	14.19A	11.46A
Module Efficiency STC (%)	21.10%		21.29%		21.48%		21.68%		21.87%	
Operating Temperature (°C)	-40°C~+85°C									
Maximum system voltage	1500VDC (IEC)									
Maximum series fuse rating	30A									
Power Tolerance	0~+3%									
Temperature coefficients of Pmax	-0.35%/°C									
Temperature coefficients of Voc	-0.28%/°C									
Temperature coefficients of Isc	0.048%/°C									
Nominal operating cell temperature [NOCT]	45±2°C									
Refer. Bifacial Factor	70±5%									

BIFACIAL OUTPUT-REAR SIDE POWER GAIN

		Rear Side Power Gain (%)				
		5%	15%	25%	35%	45%
5%	Maximum Power (Pmax)	572Wp	578Wp	583Wp	588Wp	593Wp
	Module Efficiency STC (%)	22.15%	22.36%	22.56%	22.76%	22.97%
15%	Maximum Power (Pmax)	627Wp	633Wp	638Wp	644Wp	650Wp
	Module Efficiency STC (%)	24.26%	24.48%	24.71%	24.63%	25.15%
25%	Maximum Power (Pmax)	681Wp	688Wp	694Wp	700Wp	706Wp
	Module Efficiency STC (%)	26.37%	26.61%	26.86%	27.10%	27.34%

*STC: Irradiance 1000W/m² Cell Temperature 25°C AM=1.5
 NOCT: Irradiance 800W/m² Ambient Temperature 20°C AM=1.5 Wind Speed 1m/s